

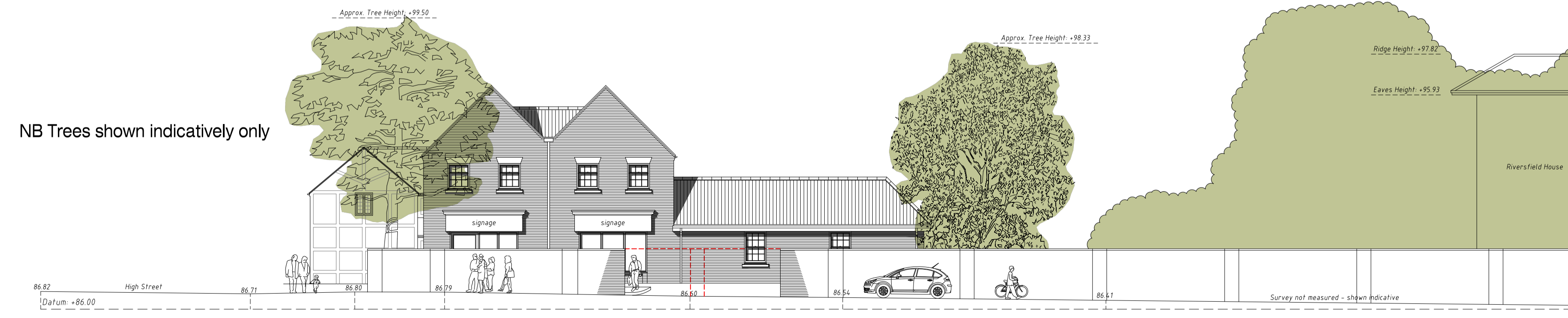
Existing Streetscene from High Street Scale 1:150 - Viewing South



Proposed Streetscene from High Street Scale 1:150 - Viewing South



Existing Streetscene from Riversfield Drive Scale 1:150 - Viewing East



Proposed Streetscene from Riversfield Drive Scale 1:150 - Viewing East



Planning Drawing

rev.	date	drawn	chk'd

Gould Singleton Architects
Earls Way, Halesowen, West Midlands, B63 3HR
Tel: 0121 550 0359 Fax: 0121 550 8088
e-mail: info@goald-singleton.co.uk

number drawn | scales | date | checked | description

1:150@A1 | Feb 2022 | DB | GSA | Proposed Streetscene Elevations

21-1875/12

This drawing and the building works depicted are the copyright of the Architects and may not be reproduced except by written permission. This drawing must be read and checked against any specialist drawings and information provided. Do not scale prints. Figured dimensions only to be taken from this drawing.